

Princess Cruises · Mediterranean

Enchanted Princess – 2021 New Ship



Enchanted Princess (2021 New Ship)

2021 年新船 總噸位 145,000 噸 載客 Guests 3,660 人 船員 Crew 1,346 人 甲板 Decks 19 層

GRAND MEDITERRANEAN 地中海全覽

CIVITAVECCHIA (ROME) TO BARCELONA

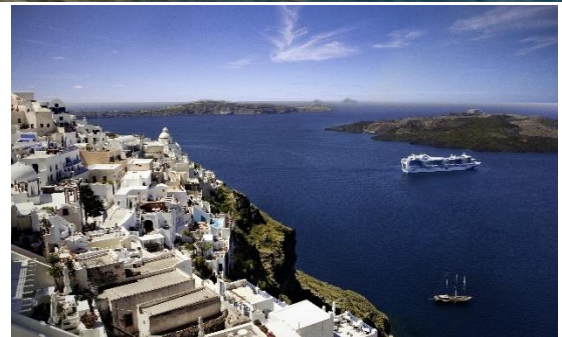
奇維塔韋基亞 (羅馬) – 巴塞隆拿

Enchanted Princess • 啟航 2023 年 11 月 • 11 晚

Itinerary & Excursions

Day	Port	Arrive	Depart
1	奇維塔韋基亞 (羅馬) · 意大利 Civitavecchia (Rome), Italy		7:00 PM
2-3	海上暢遊 At sea		
4	聖托里尼 · 希臘 Santorini, Greece*	7:00 AM	6:00 PM
5	比雷埃夫斯 (雅典) · 希臘 Piraeus (Athens), Greece	7:00 AM	8:00 PM
6	古薩達斯 (以弗所) · 土耳其 Kusadasi (Ephesus), Turkey	8:00 AM	5:00 PM
7	米可諾斯 · 希臘 Mykonos, Greece	7:00 AM	6:00 PM
8	卡塔科隆 (奧林匹亞) · 希臘 Katalolon (Olympia), Greece	9:00 AM	6:00 PM
9	海上暢遊 At sea		
10	阿雅克肖 (科西嘉島) · 法國 Ajaccio (Corsica), France	8:00 AM	6:00 PM
11	濱海拉塞納 (土倫/普羅旺斯) · 希臘法國 La Seyne (Toulon / Provence)	7:00 AM	4:00 PM
12	巴塞隆拿 · 西班牙 Barcelona, Spain	5:00 AM	

* 需乘坐接駁船登岸 Tendering Port

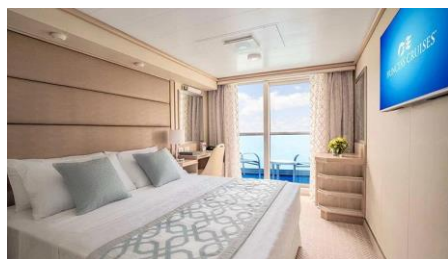


啟航日期 Departure Dates	Interior IE 158-162 Sq ft.	Balcony BF 214-222 Sq ft.	Deluxe Balcony DE 233-279 Sq ft.	Mini Suite MF 323 Sq ft.
01 Nov 2023	HK\$8,799+	HK\$14,299+	HK\$14,199+	HK\$14,699+

Misc. Charge 遊輪雜費: HK\$2,145 / Gov't Fee 政府稅: HK\$1,225

Onboard Gratuities 船員小費: Interior to Deluxe Balcony: US\$ 176 / Mini Suite: US\$187 [Charged to shipboard account 船上戶口收取]

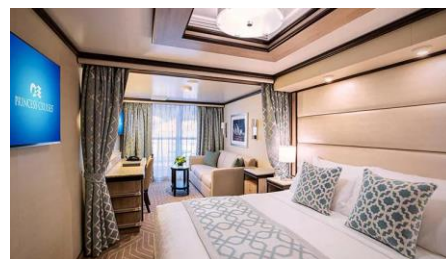
以每位成人佔半房 HKD 計算 Prices are per person on double occupancy, quoted in HKD



Balcony Stateroom



Deluxe Balcony Stateroom



Mini Suite

費用包括：

- 郵輪住宿並享用船上美食及娛樂設施

費用不包括 (如適用)

- 遊輪雜費、港口稅、需付費岸上觀光、食品及飲品、郵輪燃油附加費、船上指定保險費、護照簽發 / 簽證費用、旅遊保險、其他個人消費
- 費用以 HK\$ 二人一房每位計算。單人房、三/四人同房或兒童之費用，敬請查詢
 - 費用價格只作參考，價格視乎實際供應情況並繳付訂金時為準
 - 郵輪上各項收費均以美元結算
 - 訂位均以先到先得為準。訂位確認後，需於 3 個工作天內繳付不可退還之指定金額訂金(或全額費用)，餘下費用必須於載運機構訂下的繳款限期前或當天繳付(以較早之日期計算)
 - 全數繳付後，將不獲任何退款，在任何情況下都不能更改，轉讓或退還款項
 - 以上費用及條款如有任何更改，恕不另行通知
 - 如載運機構調整附加費或其他應繳稅費，乘客須繳付差額。實際金額以載運機構告示發出日期為準
 - 郵輪上各收費項目費用如有任何更改，恕不另行通知
 - 客人需持有回港日期起計不少於 6 個月以上有效護照及一次或多次(如適用)之到訪國家入境簽證，本公司對客人因個人證件或簽證所產生之任何問題概不負責
 - 訂位時的乘客姓名全寫必須與旅遊證件上的全名相同，任何修改將會導致失去原來之訂位、失去原來之優惠價及導致修改費用
 - 艙房號碼、層數及位置將於辦理登船手續時由郵輪公司派發，並以郵輪公司之最後安排為準。郵輪公司亦可在不收取額外費用下提升艙房至較高級別，客人不得異議
 - 若因天氣惡劣、海面狀況或各種未能預知或「迫不得已理由」(指戰爭、政治動盪、恐怖襲擊、天災、疫症、惡劣天氣、交通工具發生技術問題、載運機構臨時更改班次/時間表、罷工、工業行動、旅遊目的地政府/世界衛生組織發出旅遊警告、香港特區政府發出旅遊紅色/黑色外遊警示，以及其他業界不能控制的不利旅客外遊的情況)而不能停靠或更改行程，顧客同意及接受本公司或郵輪公司均不會作出任何補償，顧客不得異議
 - 航程中港口啓航/抵達/停靠時間會按航行情況有所調整/更改/取消，一切以郵輪公司最後安排為準。顧客同意及接受郵輪公司有最終的決定及不會當作違反商品說明條例，亦就此放棄向郵輪公司或本公司追討或索償
 - 船票以郵輪公司所頒布的航程合同所發出。有關條款及細則均以刊登之條款為準 <http://www.princess.com/>
 - 「香港旅遊業監管局」(TIA)建議客人出發前購買郵輪保險或旅遊綜合保險
 - 以上費用及條款如有任何更改，恕不另行通知。其他條款按本公司之「訂購條款與責任細則」為準，詳情請與本公司職員查詢
 - 本公司及郵輪公司保留權利隨時更改以上費用、條款及細則。若有任何異議，本公司及郵輪公司保留一切最終決定權

Includes:

- Cruise on board including accommodation, meals, entertainment & access to facilities

Fare Exclusion (If applicable)

- NCCF, Government Fees, Shore Excursions, Priced Food & Beverage items, Gratuities, Cruise Fuel Surcharges, Cruise Insurance Premium, Passport / Travel Visa Fees, Travel Insurance, Any Personal Expenses
- Fares quoted are per person in HK\$ based on double occupancy
 - Fares listed on the flyer are for reference only, fares are subject to availability and to be confirmed at the time of a paid reservation.
 - Shipboard currency: US\$.
 - Reservation is on first come-first serve basis. A non-refundable deposit with indicated amount (or full payment) is required within 3 working days upon confirmation. Balance payment must be received on / before the deadline set by the carrier (whichever earlier).
 - Refund for cancellation after full payment will not be entertained. Cruise Fare is non-endorsable, non-reroutable and non-refundable.
 - All prices, fees and taxes are subject to change without prior notice.
 - Rights are reserves to collect fuel supplements, applicable taxes which imposed by the carrier, even for a full paid reservation. Exact amount will be determined on the date of notification received from the carrier.
 - The price for chargeable or priced items onboard are subject to change without prior notice.
 - Passengers must have passport with at least 6 months validity on the date of return, and valid visa(s) for visiting the port of call listed in the itinerary. Cruise Company and her booking agencies and representatives will not be liable for any consequences due to visa or passport issues.
 - Passengers' full name as shown on travel document is required at the time of booking. Amendment will likely result in fare difference, loss of reservation and / or incurring amendment fees.
 - Stateroom assignment is at cruise line's discretion, and on best available basis. Cruise line reserves the rights offering higher category accommodations at no additional cost.
 - Passengers accept full responsibility for all losses and expenses due to "Reasons beyond control". Cruise line and the travel agency will not be liable for any consequences. ("Reasons beyond control" means hostilities, political unrest, natural disasters, pestilences, bad weather, technical problems to transport, changes to the frequency or timetable of any means of conveyance by its operator without advance notice, strikes, industrial action, etc.)
 - Cruise line may reserves the rights to make changes on itinerary, timing on all embarkations/disembarkations, and port(s) call cancellation due to weather condition or specific reasons. All of the changes will not be considered as against "The Trade Descriptions Ordinance, Chapter 362, Laws of Hong Kong". Passengers shall not make claim against the cruise line or/and the travel agency for any compensation.
 - Cruise ticket issuance is subject to the terms and conditions as stated on the passage contract, thus the terms and condition laid on: <http://www.princess.com/>
 - HK Travel Industry Authority recommends passenger to take out the travel insurance before the journey.
 - The above Terms and Conditions are subject to change without prior notice. Travel agency reserves the rights to alter the terms & conditions and make final decision in case of any disputes.
 - Cruise line and travel agency reserve the right to amend the terms and conditions without prior notice. In case of disputes, Cruise Company and travel agency reserve the right to make the final decision.

查詢及報名：2870 8798 | info@travel-resources.com.hk | www.travel-resources.com.hk

九龍尖沙咀麼地 1-3 號德拓大廈 2 樓 2/F, Yes & Right House, 1-3 Mody Road, Tsim Sha Tsui, Kowloon