

Crystal Symphony 11N · Norwegian Fjords from Dover

水晶合韻號 11 晚 · 挪威峽灣由多佛爾出發

HK\$ **39,499** ^{up}



Crystal Symphony 水晶合韻號

GRT 總噸位- 51,044 | Refurbish 翻新 - 2017 | Pax 載客 - 848 |

Sailing Date 啟航日期: 8 Aug, 2020

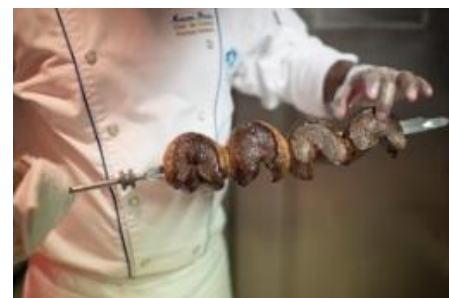
Itinerary 行程

Date 日程	Ports of Call 港口	ETA 到達	ETD 啟航
8 Aug (Sat)	Dover(London), United Kingdom 多佛爾(倫敦), 英國	-	1800
9 Aug (Sun)	Cruising 海上航行	-	-
10 Aug (Mon)	Edinburgh, United Kingdom 愛丁堡, 英國 [#]	0800	-
11 Aug (Tue)	Edinburgh, United Kingdom 愛丁堡, 英國 [#]	-	1700
12 Aug (Wed)	Lerwick (Shetland), United Kingdom 勒威克(謝德蘭群島), 英國 [#]	0830	1700
13 Aug (Thu)	Nordfjordeid, Norway 努爾菲尤爾埃德, 挪威	0900	1800
14 Aug (Fri)	Bergen, Norway 卑爾根, 挪威	0800	1800
15 Aug (Sat)	Eidfjord, Norway 埃德菲尤爾, 挪威	0800	1800
16 Aug (Sun)	Haugesund, Norway 海于格松, 挪威	0800	1800
17 Aug (Mon)	Cruising 海上航行	-	-
18 Aug (Tue)	Amsterdam, Netherlands 阿姆斯特丹, 荷蘭	0800	-
19 Aug (Wed)	Amsterdam, Netherlands 阿姆斯特丹, 荷蘭	-	-

[#]Tender Required 需轉乘接駁船登岸

一價盡享·暢享無憂

- 無限量暢飲美酒、香檳及烈酒
- 免船上船員小費
- 24 小時客房服務
- 享用特色餐廳: 意大利菜式 - Prego 及 新派日式料理 - Umi Uma & Bra
- 無限船上 WIFI 無線網路



Fares are in HKD, unless indicated 除標明貨幣外，價目以港幣計算

Deluxe Stateroom with Large Picture Window - Fully Obstructed View

豪華海景房 - 景觀受阻 (E2)

39,499^{up}

Deluxe Stateroom with Large Picture Window

豪華海景房(D)

45,819^{up}

Deluxe Forward Stateroom with Large Picture Window

豪華海景房(C2)

52,529^{up}

Port Charge 碼頭稅: 4,175



Crystal Penthouse



Seahorse Pool



Lido Cafe



Paddle Tennis

費用包括

- ◆ 郵輪住宿並享用船上美食及娛樂設施
- ◆ 船員小費
- ◆ W-Fi 無線網路
- ◆ 無限暢飲美酒、香檳及烈酒

費用不包括 (如適用)

- ◆ 季節性附加費、旅行社服務費、港務費、港口稅、需付費食品及飲品、郵輪燃油附加費、船上指定保險費、護照簽發 / 簽證費用、旅遊保險、其他個人消費

Terms & Conditions 條款及細則

1. 費用以港元二人一房每位計算。單人房、三/四人同房或兒童之費用，敬請查詢
2. 費用按 **2020 年 2 月 11 日** 之價格作參考指引，價格視乎供應情況並繳付訂金時為準
3. 郵輪上各項收費均以 **美元** 結算
4. 訂位均以先到先得為準。訂位確認後，需於 3 個工作天內繳付不可退還之指定金額訂金(或全額費用)，餘下費用必須於載運機構訂下的繳款限期前或當天繳付(以較早之日期計算)
5. 全數繳付後，將不獲任何退款(港務費除外)，套票在任何情況下都不能更改、轉讓或退還款項
6. 客人必須出發前領取船票
7. 如載運機構調整附加費或其他應繳稅費，乘客須繳付差額。實際金額以載運機構告示發出日期為準
8. 郵輪上各收費項目費用如有任何更改，恕不另行通知
9. 客人需持有回港日期起計不少於 6 個月以上有效護照及一次或多次(如適用)之到訪國家入境簽證，本公司對客人因個人證件或簽證所產生之任何問題概不負責
10. 訂位時的乘客姓名全寫必須與旅遊證件上的全名相同，任何修改將會導致失去原來之訂位、失去原來之優惠價及導致修改費用
11. 艙房號碼、層數及位置將於辦理登船手續時由郵輪公司派發，並以郵輪公司之最後安排為準。郵輪公司亦可在不收取額外費用下提升艙房至較高級別，客人不得異議
12. 若因天氣惡劣、海面狀況或各種未能預知或「迫不得已理由」(指戰爭、政治動盪、恐怖襲擊、天災、疫症、惡劣天氣、交通工具發生技術問題、載運機構臨時更改班次/時間表、罷工、工業行動、旅遊目的地政府/世界衛生組織發出旅遊警告、香港特區政府發出旅遊紅色/黑色外遊警示，以及其他業界不能控制的不利旅客外遊的情況)而不能停靠或更改行程，顧客同意及接受本公司或河船公司均不會作出任何補償，顧客不得異議
13. 航程中港口啟航/抵達/停靠時間會按航行情況有所調整/更改/取消，一切以郵輪公司最後安排為準。顧客同意及接受郵輪公司有最終的決定及不會當作違反商品說明條例，亦就此放棄向郵輪公司或本公司追討或索償
14. 船票以郵輪公司所頒布的航程合同所發出。有關條款及細則均以刊登之條款為準
<http://www.crystalcruises.com/legal/crystal-cruises-general-ticket-terms-conditions>。
15. 「香港旅遊業議會」(TIC)建議客人出發前購買郵輪保險或旅遊綜合保險。
16. 以上費用及條款如有任何更改，恕不另行通知。其他條款按本公司之「訂購條款與責任細則」為準，詳情請與本公司職員查詢
17. 本公司及郵輪公司保留權利隨時更改以上費用、條款及細則。若有任何異議，本公司及河船公司保留一切最終決定權

Inclusion

- ◆ Cruise on board including accommodation, meals, entertainment & access to facilities
- ◆ Gratuities
- ◆ Wi-Fi
- ◆ Unlimited drinks including fine wine, champagne and premium spirits

Exclusion(If applicable)

- ◆ Seasonal Surcharge, Travel Agent Service Fee, Port Charges, Government Fees, Priced Food & Beverage items, Gratuities, Cruise Fuel Surcharges, Cruise Insurance Premium, Passport / Travel Visa Fees, Travel Insurance, Any Personal Expenses.

Terms & Conditions

1. Fares quoted are per person in Hong Kong Dollars based on double occupancy. Single/Triple/Quad or Child fare is available on request basis.
2. Fares listed on the flyer are based on quotation as of **11 Feb20**, it is subject to availability and to be confirmed at the time of a paid reservation.
3. Shipboard currency: **US**
4. Reservation is on first come-first serve basis. A non-refundable deposit with indicated amount (or full payment) is required within 3 working days upon confirmation. Balance payment must be received on / before the deadline set by the carrier (whichever earlier).
5. Refund for cancellation after full payment will not be entertained (except Port Charge). Fly-Cruise package is non-endorsable, non-reroutable and non-refundable. Passenger must collect cruise document before departure
6. Rights are reserves to collect fuel supplements, applicable taxes which imposed by the carrier, even for a full paid reservation. Exact amount will be determined on the date of notification received from the carrier.
7. The price for chargeable or priced items onboard are subject to change without prior notice.
8. Passengers must have passport with at least 6 months validity on the date of return, and valid visa(s) for visiting the port of call listed in the itinerary. Cruise Company and her booking agencies and representatives will not be liable for any consequences due to visa or passport issues.
9. Passengers' full name as shown on travel document is required at the time of booking. Amendment will likely result in fare difference, loss of reservation and / or incurring amendment fees.
10. Stateroom assignment is at cruise line's discretion, and on best available basis. Cruise line may reserves the rights offering higher category accommodations at no additional cost.
11. Passengers accept full responsibility for all losses and expenses due to "Reasons beyond control". Cruise line and the travel agency will not be liable for any consequences. ("Reasons beyond control" means hostilities, political unrest, natural disasters, pestilences, bad weather, technical problems to transport, changes to the frequency or timetable of any means of conveyance by its operator without advance notice, strikes, industrial action, etc.)
12. Cruise line may reserves the rights to make changes on itinerary, timing on all embarkations/disembarkations, and port(s) call cancellation due to weather condition or specific reasons. All of the changes will not be considered as against "The Trade Descriptions Ordinance, Chapter 362, Laws of Hong Kong". Passengers shall not make claim against the cruise line or/and the travel agency for any compensation.
13. Cruise ticket issuance is subject to the terms and conditions as stated on the passage contract, thus the terms and condition laid on:
<http://www.crystalcruises.com/legal/crystal-cruises-general-ticket-terms-conditions>。
14. HK Travel Industry Council recommends passenger to take out the travel insurance before the journey.
15. The above Terms and Conditions are subject to change without prior notice. Travel agency reserves the rights to alter the terms & conditions and make final decision in case of any disputes.
16. Cruise line and travel agency reserve the right to amend the terms and conditions without prior notice. In case of disputes, Cruise Company and travel agency reserve the right to make the final decision.