

西澳珀斯 | 瑪格麗特河葡萄酒區 Margaret River Wine Region

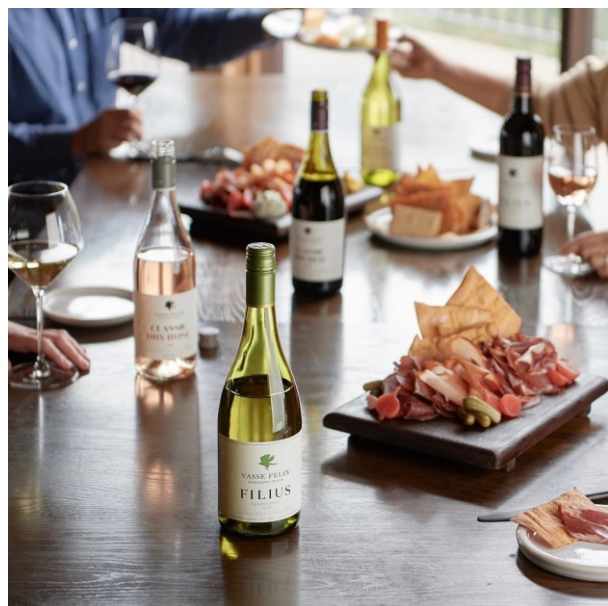
3夜[出發日期: 至2025年3月31日] | 3 Nights [Travel Period: Till to 31Mar2025]



✓ 國泰航空來回經濟客位機票
Round trip economy class air
ticket on CX

✓ 瑪格麗特河酒莊一日遊
Taste of Margaret River

✓ 3晚珀斯酒店住宿
3 nights Perth hotel
accommodation



從珀斯 (Perth) 出發，前往一向廣受國際好評的西南地區-瑪格麗特河 (Margaret River)，沉溺於當地的自然風光、頂級葡萄酒及精緻的當地特產。優秀的地理位置和微氣候孕育出優雅的葡萄酒。包括霞多麗 (Chardonnay) 和赤霞珠 (Cabernet Sauvignon)。在享用精緻美食之前，可先於獲獎的酒窖品嚐釀製的葡萄酒。

Vasse Felix 是瑪格麗特河的創始葡萄酒莊園，除了歡大家參觀它的酒窖、現代酒廊、博物館和藝術畫廊。它的餐廳亦被授予“2021年西澳洲餐廳”稱號，是受推崇的用餐體驗之一，環境優美，讓您盡情享受當地風味和創意美食，與 Wine Collection 相得益彰。

這個受歡迎的一日遊，亦將參觀另外2個酒莊，享受輕鬆的遊覽和小酌。



1人成行 GVI

有關套票的條款及細則請參閱最後一頁

Tour Code : CXPERWINE23 Ref No. : 40867 WAL/28SEP23/3950



For reservation & enquiry, please contact hotline 訂購及查詢，歡迎聯絡顧客服務熱線

☎ 9165 8365

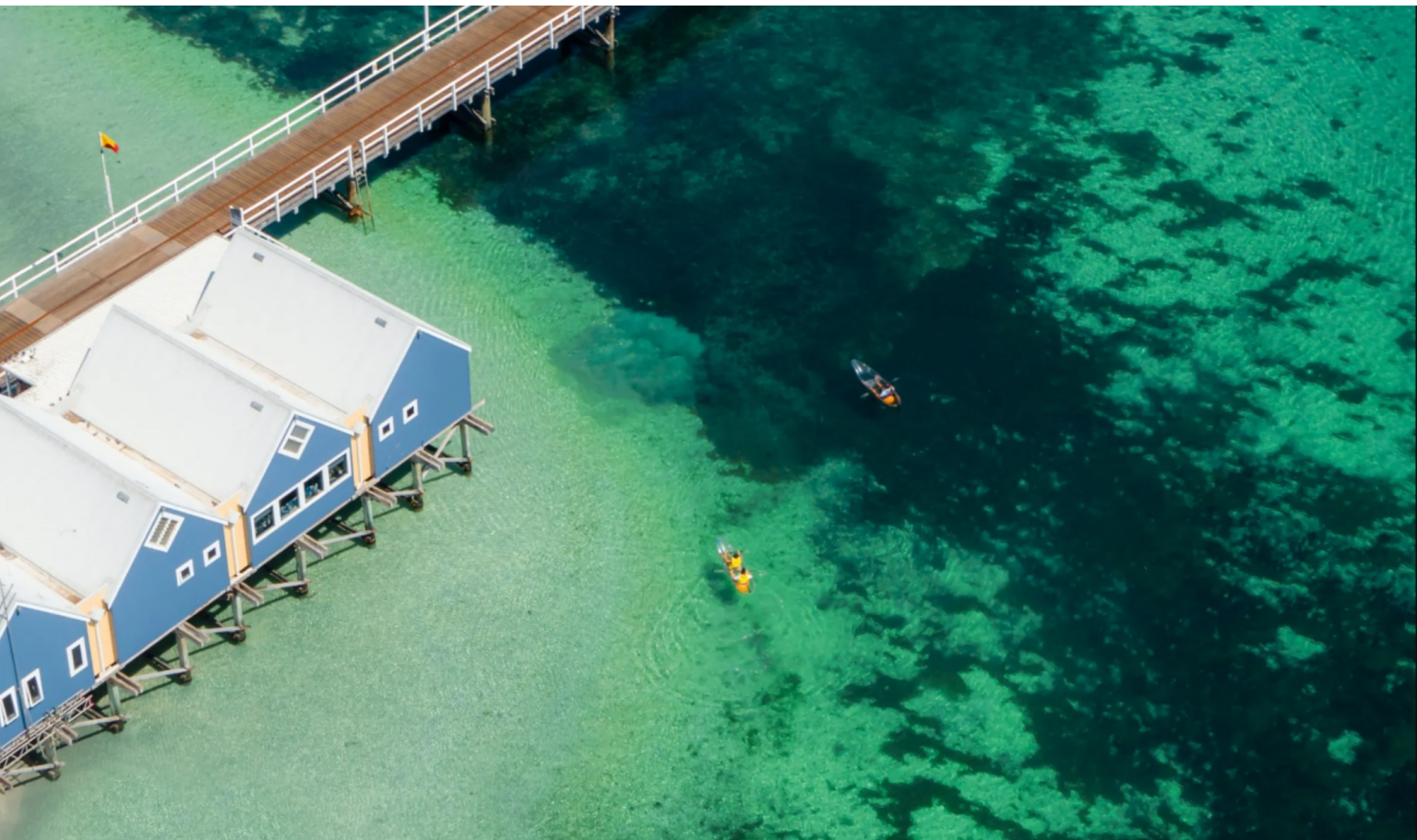
☎ 2316 1106

✉ cs.online@lotusint.com.hk

🌐 lotustours.com.hk

西澳珀斯 | 瑪格麗特河葡萄酒區 Margaret River Wine Region

3夜[出發日期: 至2025年3月31日] | 3 Nights [Travel Period: Till to 31Mar2025]



私人品酒導賞團 – 於瑪格麗特河 (Margaret River) 這個結合自然景色、清新的沿海空氣、適合生產優質葡萄酒和美味食物的天然氣候和土壤之中，享受輕鬆的遊覽、用餐和小酌。在這個受歡迎的一日遊中，我們將參觀令人驚嘆的酒莊之餘，亦可以感受到屬於大自然的奧妙。

This Wine Tour is a sociable and intimate experience of the Margaret River Wine region. It contains some of the world's most majestic coastline and rich grape growing country. You'll sample the region's best cuisine, talk to the winemaker and qualified wine experts of the wineries we visit.

First stop at Crooked Carrot Cafe, then to Yallingup's scenic Canal Rocks and Smith Beach. Next, we journey to taste some award-winning wines in the ambience of the stunning Cherubino Estate. Next stop is Vasse Felix of Clairault Streiker for a scrumptious 3 course lunch with premium wines. To finish, we visit the magnificent Aravina Estate or Gabriel's chocolate. We then depart for Perth via the legendary Busselton jetty.

Start Time – 08:45 am

Finish Time – approx. 07:30 pm

Pick-up Location - From your Perth city accommodation

Tour Highlights –

- Fully private tour with a minimum 6 people on tour
- Touring in luxury 4WD Land Rover Discovery fleet



1人成行 GVI

有關套票的條款及細則請參閱最後一頁

Tour Code : CXPERWINE23 Ref No. : 40867 WAL/28SEP23/3950



For reservation & enquiry, please contact hotline 訂購及查詢，歡迎聯絡顧客服務熱線

☎ 9165 8365

☎ 2316 1106

✉ cs.online@lotusint.com.hk

🌐 lotustours.com.hk

西澳珀斯 | 瑪格麗特河葡萄酒區 Margaret River Wine Region

3夜[出發日期: 至2025年3月31日] | 3 Nights [Travel Period: Till to 31Mar2025]



✓ 國泰航空來回經濟客位機票
Round trip economy class air
ticket on CX

✓ 瑪格麗特河酒莊一日遊
Taste of Margaret River

✓ 3晚珀斯酒店住宿
3 nights Perth hotel
accommodation

精選 珀斯酒店

Holiday Inn West Perth

www.ihg.com/holidayinn/hotels/us/en/west-perth/perpw/hoteldetail

Standard Room

Bed Type: King/Twin Beds
續住每晚: HK\$1,000+ | 不包早餐

成人佔半房
(每位) **\$7,999+**



Vibe Hotel Subiaco Perth

<https://vibehotels.com/book-accommodation/perth/hotel-subiac/>

Guest Room

Bed Type: King/Twin Beds
續住每晚: HK\$1,180+ | 不包早餐

成人佔半房
(每位) **\$8,199+**



Quay Perth

<https://quayperth.com/en/>

Esplanade Studio

Bed Type: King/Twin Beds
續住每晚: HK\$1,450+ | 不包早餐

成人佔半房
(每位) **\$8,599+**



CATHAY PACIFIC

※ 套票以淡季價格計算，於旺季、週末及假期前夕或大型節日期間出發，需另付附加費。詳情向本社職員查詢作準

1人成行 GVI

有關套票的條款及細則請參閱最後一頁

Tour Code : CXPERWINE23 Ref No. : 40867 WAL/28SEP23/3950



For reservation & enquiry, please contact hotline 訂購及查詢，歡迎聯絡顧客服務熱線

☎ 9165 8365

☎ 2316 1106

✉ cs.online@lotusint.com.hk

🌐 lotustours.com.hk

Page 3 of 4

Licence No. 350296

西澳珀斯 | 瑪格麗特河葡萄酒區 Margaret River Wine Region

3夜[出發日期: 至2025年3月31日] | 3 Nights [Travel Period : Till to 31Mar2025]



國泰航空珀斯機票附加費表

CX Perth Airfare Surcharge

出發日期: 至2025年3月31日

Travel Period : Till to 31Mar2025

1人成行 GV1				
Departure	Adult	Child	Booking Class	Ticket Validity
			International	
Till 28 Mar 2024	-	-	N	Max. 3 months
	1,300	980	S	
	2,400	1,800	V	

Domestic Fares are subject to change, please refer to GDS fare for details

Price Includes :

- Round trip economy class air ticket between Hong Kong and Perth on CX
- Taste of Margaret River Wine Tour
- 3 nights Perth hotel accommodation
- HK\$100,000 Travel Insurance [Zurich Insurance (Hong Kong) 24-hour emergency hotline+852-2886-3977]
- & 0.15% TIC Levy

Terms & Conditions :

- Package price is per person (in HK\$) and valid between **01Apr2024-31Mar2025**; and hotel stay must be completed by 31Mar2025
- Booking class : N Ticket validity : Max.3 months
- International flights valid on CX only
- Twin room is based on 2 single beds or 1 double bed
- Airport tax, HK security charge & fuel surcharge(if any) are not included
- A non-refundable deposit of HK\$1000 per person required upon reservation
- Full payment must be made after confirmation with no refund
- Upon confirmation, any amendment is subject to company's discretion
- All prices and conditions are subject to change without prior notice
- Check whether the Security Bureau has issued any [Outbound Travel Alert](#) for your destination before firming up your travel plan to ensure personal safety
- A service fee of HK\$30 will be collected for each ticket issued

費用包括 :

- 國泰航空來回香港與珀斯經濟客位機票
- 瑪格麗特河酒莊一日遊
- 3晚珀斯酒店住宿
- HK\$100,000旅遊保險[蘇黎世保險(香港) 24小時緊急支援服務+852-2886-3977]
- 0.15% 旅遊業賠償基金

條款及細則 :

- 以上套票價錢以每成人計算, 有效日期為2024年4月01日至2025年3月31日; 酒店入住必須於2025年3月31日或之前完成
- 訂位代號: N 機票有效期: 最長3個月
- 國際航班只適用於CX航班
- 雙人房之房種為2張單人床或1張雙人床
- 費用包括費用並未包括兩地機場稅, 香港機場保安稅及燃油附加費(如適用)
- 訂位時須繳交訂金港幣每位\$1000
- 餘款需於機票及酒店確認後繳付及恕不退還
- 於機票及酒店確認後, 如需更改本公司擁有最終決定權
- 所有費用如有更改, 恕不另行通知
- 為確保自身安全, 旅客在落實行程前, 應留意保安局有沒有對目的地發出[外遊警示](#)
- 每發出機票乙張, 收取港幣\$30服務費



1人成行 GV1

有關套票的條款及細則請參閱最後一頁

Tour Code : CXPERWINE23 Ref No. : 40867 WAL/28SEP23/3950



For reservation & enquiry, please contact hotline 訂購及查詢, 歡迎聯絡顧客服務熱線

☎ 9165 8365 ☎ 2316 1106 ✉ cs.online@lotusint.com.hk 🌐 lotustours.com.hk

Page 4 of 4

Licence No. 350296